




VIBRANT  
VILLAGE  
FOUNDATION

2 0 1 7 . 1 8

PORTFOLIO  
SNAPSHOT

A multi-faceted, integrated approach to community development.





We believe that breaking the cycle of poverty requires multi-faceted, interrelated, and long-term interventions.

We support integrated approaches to community development that focus on basic needs: water, sanitation and hygiene, food security, livelihoods and economic development, community health, and education.

## LETTER FROM the EXECUTIVE DIRECTOR



In October, I traveled to Guatemala to visit two of our grant partners working in Alta and Baja Verapaz, which was my first time back to the country in over five years. As we drove through the bustling city and ventured onto the mountainous backroads, I was flooded with familiar sounds, sights and smells that reminded me of my years living there.

On the first leg of my journey, I traveled with our partner, Trickle Up, to a remote community north of Cobán, where their team is delivering a Graduation Model program for women ages 16-24. On our walk back from the community hall, I met a young woman who had just received the seed funds to start her own business. She was planning to re-sell clothing in her community during the Christmas holiday rush and was practically running with the check in hand, to begin preparations.

Later in the week, I traveled to Baja Verapaz with The Gardens Edge/Qachuu Aloom to observe their child and maternal health program. There I met Maria, who is growing amaranth in her back yard to sell as seed and to support the nutrition of her youngest daughter, who was born many months premature.

In both instances, these women demonstrated something specific that continues to inspire me in my work. I would describe it as a mix of self-confidence, mastery and hope, which I recognized from the glimmer in their eyes and the contagious excitement in their voices. I sensed it immediately in both these woman, as they proudly explained what they are doing to carve out a better future for their families. I remember thinking to myself, *this is what empowerment looks like*. The feeling was almost palpable and left me with a deep respect for these women and for the organizations we partner with, who work alongside them.

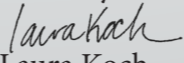
In November, I was asked to step into a new leadership role as the Foundation's first Executive Director. Having just returned from Guatemala with a renewed sense of purpose and commitment to participatory community development – the timing for this new role could not have been more perfect.

In the following months, I have been working closely with Ken, our Founder and President to further articulate his vision and interests for the Foundation and to explore opportunities to elevate our work. Together, with our board and staff, we have been examining what it means to be both a funder and practitioner; exploring ways to engage in learning partnerships, and defining how we can contribute meaningfully to the work of international development. From these conversations, we are emerging with a clearer understanding of ourselves and a stronger vision for our future.

What is clear today, now more than ever, is our commitment to supporting communities through people-centered development. In 2018 and beyond we plan to invest deeply in projects that honor local, indigenous knowledge and empower people as agents of their own change.

One exciting example, is a new partnership we are developing with Groundswell International and their affiliates in Ecuador and Ghana to introduce the concepts of agroecology to our field offices. This approach is centered around farmer-to-farmer education to revive soils and build resilience against climate change and food insecurity. We are hoping to bring similar approaches, which include the use of green manure, cover cropping and no till agriculture, to our work in Kenya and Senegal, where there is huge need and opportunity.

As we look ahead, 2018 is filled will many exciting opportunities for growth and learning. For this, I want to thank our incredible staff, board and partners for their commitment to asking the tough questions and for pushing us to do our best work. I also want to thank Ken for his continued leadership, for his courage to take risks, adapt and learn and for trusting our team to take the Foundation to the next level.

Sincerely,  
  
Laura Koch  
Executive Director



# ECUADOR

## Vibrant Village Ecuador

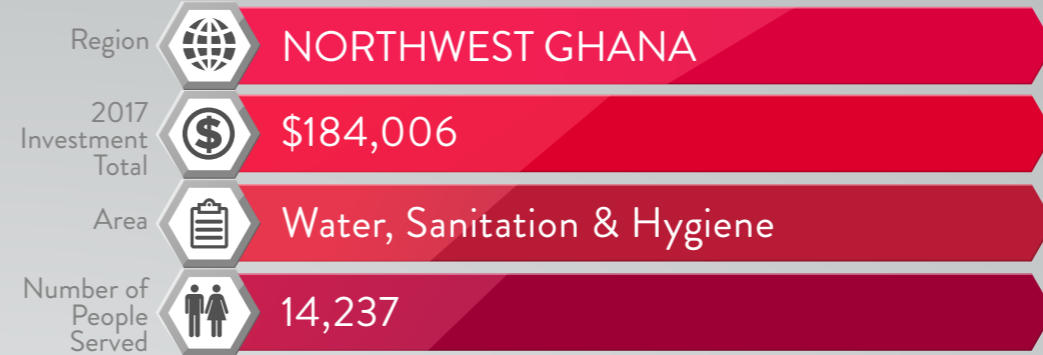


Our field office in Northern Ecuador has been operating since 2011. We continue to improve access to food and livelihoods through the development of backyard, community and school gardens. In 2017, we supported 235 gardens in households and schools. We also provided quality after school arts programming in dance and textiles and served daily meals to 140 elders in the community.

In 2018, we plan to strengthen our program by incorporating agro-ecology principles and approaches, which are designed to improve soils and empower smallholder farmers in the region.

# GHANA

## Vibrant Village Ghana

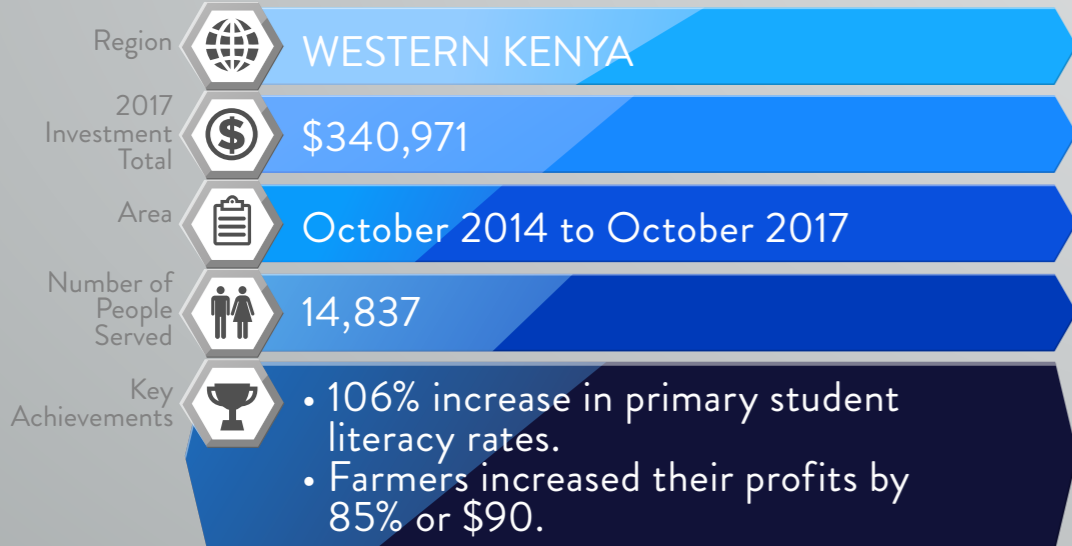


Our field office in the Upper West Region of Ghana has been operating since 2011. In 2017, our team in Ghana focused on building and repairing potable water sources and training families and students in sanitation and hygiene practices. We also supported small business development activities, such as soap making and community gardening.

In 2018, we welcomed Osman Mohammed as our new Program Director in Ghana. Osman comes to us with deep experience in community development. He was born and raised in Northern Ghana and is excited to return to the region after working for several years in Sierra Leone on child protection and women's empowerment initiatives. In 2018, Osman will conduct a participatory needs assessment, and redesign a new, holistic program strategy to address the most pressing needs for communities in the region.

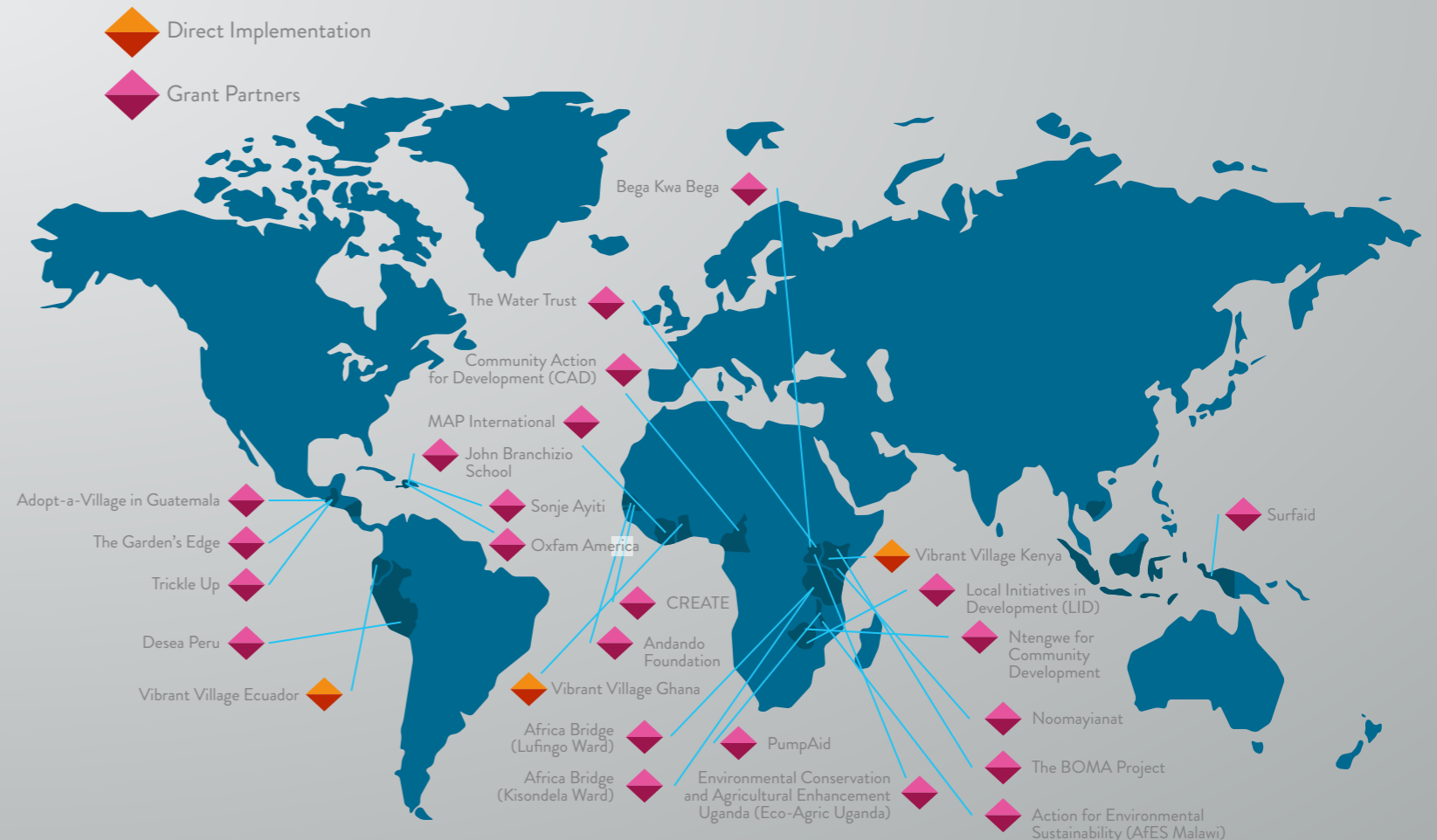
# KENYA

## Vibrant Village Kenya



In 2017, our Kenya field office, located near Kisumu in Western Kenya, expanded our flagship Farm Input Program which provides small agricultural loans and training for 2,545 farmers in the region. We also grew our Education Learning Volunteer program to support 1,476 elementary school students who are struggling with reading and math.

In 2018, the Farm Input program will continue its expansion to reach nearly 5,000 farmers.





# CAMEROON

Community Action for Development



- Region: NORTHWEST CAMEROON
- Grant Total: \$145,858
- Duration: October 2014 to October 2017
- Area: Food Security
- Key Stats: 182 Farmers Served
- Key Successes: Average Household income increase of \$404/year

Community Action for Development supports farmer groups in the communities surrounding Bakossi National Park in Northwest Cameroon. The program we supported trained 182 rural farmers on food crop and livestock production techniques, agroforestry, appropriate crop storage and processing, and farmer-to-private-sector partnership.

# GUATEMALA

The Garden's Edge



- Region: CENTRAL GUATEMALA
- Grant Total: \$58,000
- Duration: April 2017 to March 2018
- Area: Food Security, Health
- Key Stats: 180 People Served
- Key Successes: 21% of children improved their nutritional indicators

The Garden's Edge has worked in Guatemala for 14 years with their local partner, Qachuu Aloom to support sustainable agriculture, seed production and nutrition for indigenous families. Our partnership with The Garden's Edge in Rabinal supports mothers to improve the nutrition and food security of their young children.

# CÔTE D'IVOIRE

MAP International



- Region: CENTRAL CÔTE D'IVOIRE
- Grant Total: \$150,000
- Duration: June 2015 to May 2017
- Area: Food Security, Education
- Key Stats: 6,000 People Served
- Key Successes:
  - Families enrolled in capacity-building programs increased their income by an average of 35%.
  - 100% of children now have proper documentation, and have access to schools.

We partnered with MAP International in Cote d'Ivoire to support the communities of Abouakro and Drimbo. The program upgraded school facilities; helped children secure proper documentation and therefore access to formal education; promoted agriculture and livestock as alternative livelihoods; and improved community governance and conflict resolution skills.

# GUATEMALA

Adopt-a-Village in Guatemala



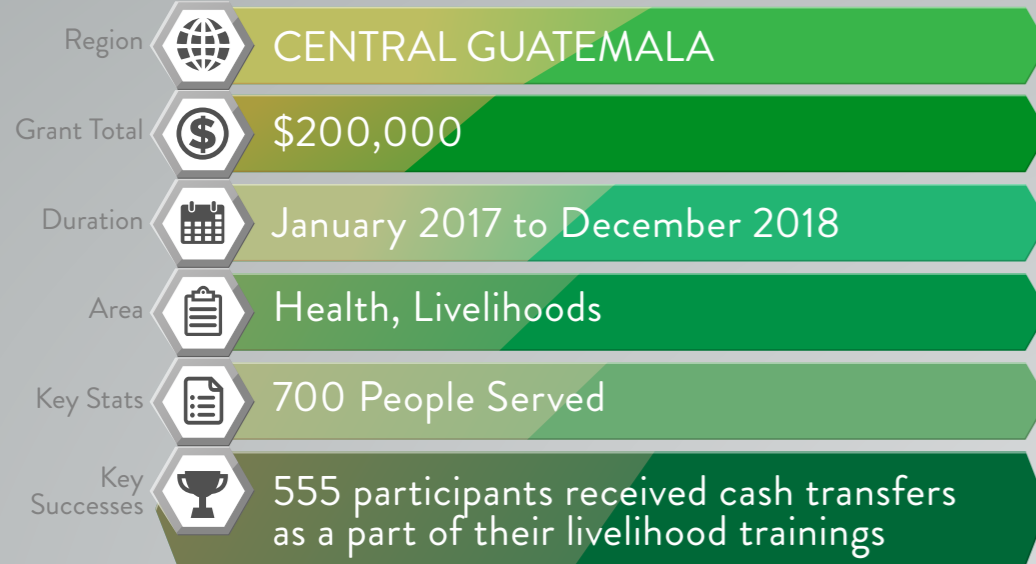
- Region: WESTERN GUATEMALA
- Grant Total: \$45,000
- Duration: February 2015 to January 2018
- Area: Food Security, Health, Education
- Key Stats: 425 People Served
- Key Successes: 69 women are using compost in their raised garden beds to cultivate vegetables and other crops to enhance their families' nutritional intake.

Adopt-a-Village Guatemala is dedicated to improving food security through gardening in small communities in the western highlands. The program we support provides cooking and nutrition classes so families can learn new ways to cook the produce they grow.



# GUATEMALA

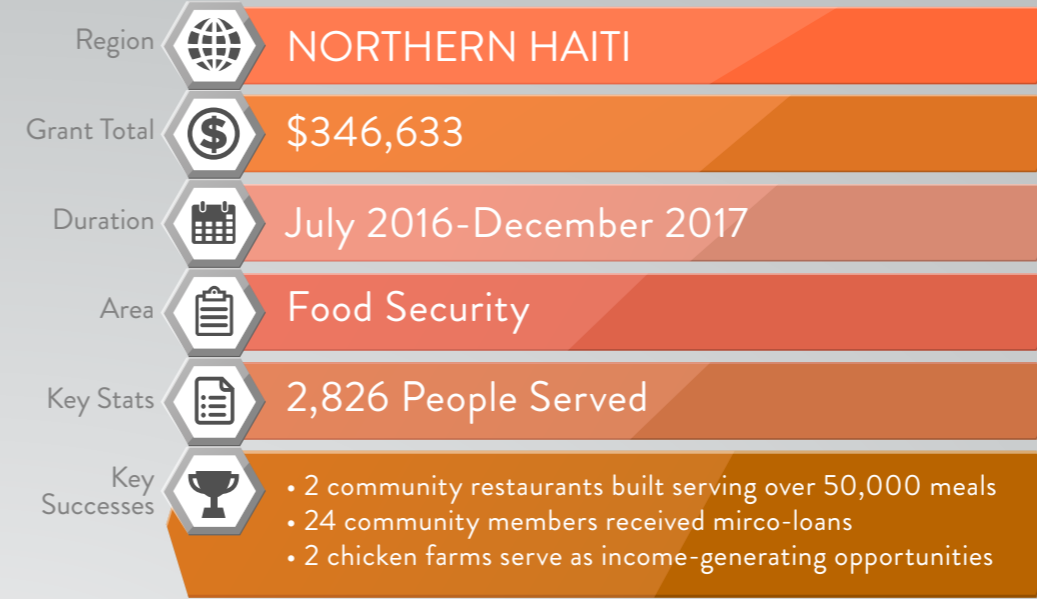
Trickle Up



Trickle Up supports a Graduation Model program that provides seed-funds and training for 700 young women to start small businesses. Trickle Up also provides reproductive health education to men and women in the community to promote healthy birth spacing and lower the incidence of teenage pregnancy.

# HAITI

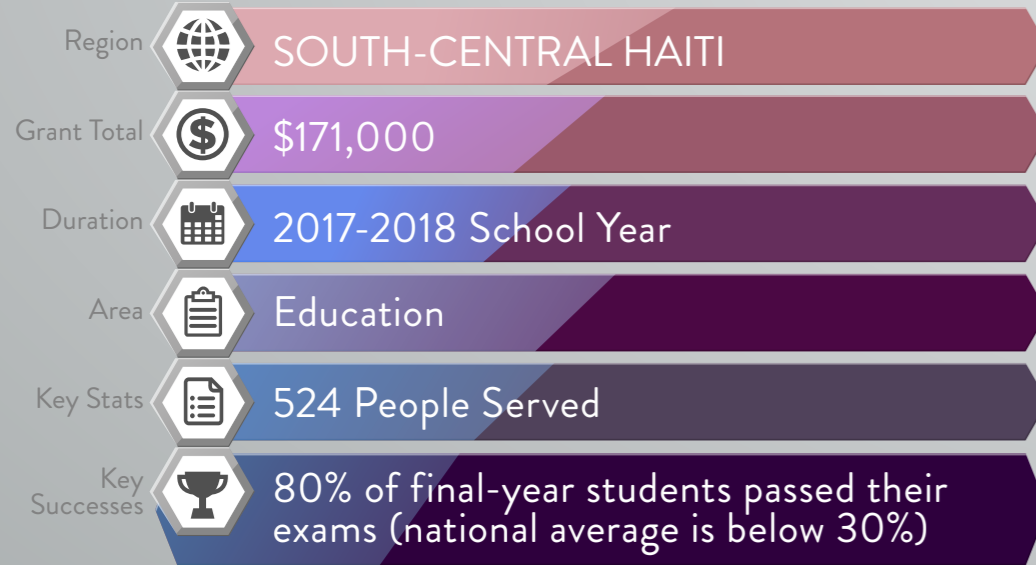
Sonje Ayiti



Sonje Ayiti manages two community restaurants in the northern Haitian towns of Paulette and Phaeton. These restaurants charge minimal fees for very low income children and the elderly, and have become places where community members and travelers alike can enjoy a healthy meal.

# HAITI

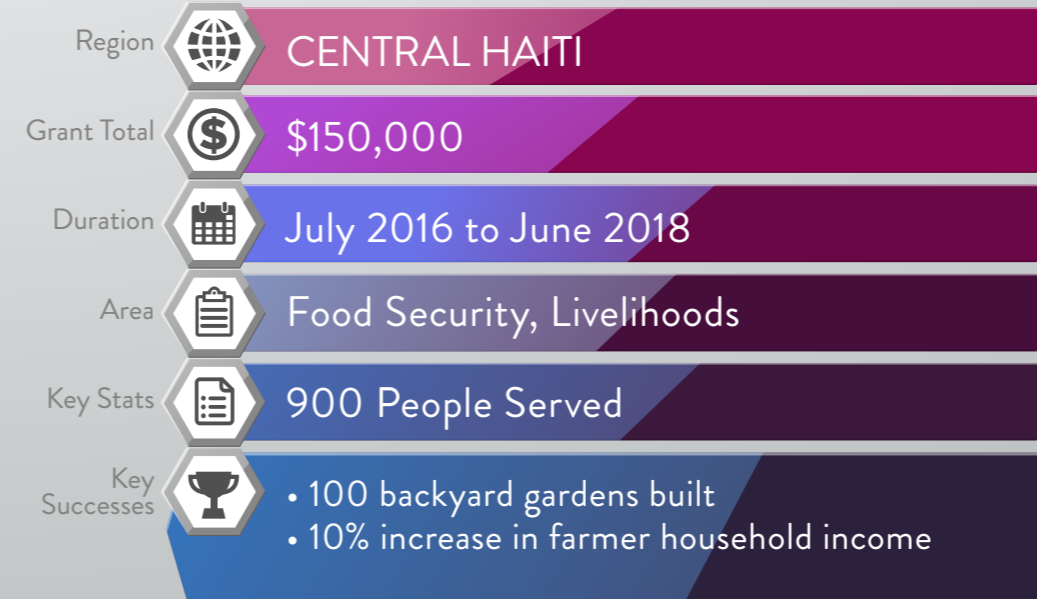
Haiti Children, John Branchizio School



Since 2010, we have financially supported 100% of the operating expenses for the John Branchizio school in a low income, urban neighborhood of Port-au-Prince. Our partner, Haiti Children continues to focus on providing quality of education and daily lunches for nearly 500 children.

# HAITI

Oxfam America



Oxfam America's program in Delonger, Haiti works to improve food security for a community of farmers. With our support, Oxfam provides training in SRI (System of Rice Intensification), access to credit, and gardening training. Participants are reporting increased crop yields and incomes.



# INDONESIA

## SurfAid



### SURFAID

- Region: SOUTHWEST INDONESIA, MENTAWAIS ISLANDS
- Grant Total: \$150,000
- Duration: January 2017 to December 2019
- Area: Health, Water, Sanitation & Hygiene, Food Security
- Key Stats: 2,900 People Served
- Key Successes: 14 communities receive support in WASH, Education and permaculture to improve their livelihoods and nutritional status.

SurfAid is working to increase livelihoods, food security and nutrition for 14 relocated communities from the tsunami-affected areas of South Pagai Islands. With our support, SurfAid provides agricultural training and improves access to water sources and sanitation facilities.

# KENYA

## The BOMA Project



### BOMA PROJECT

- Region: NORTHERN KENYA
- Grant Total: \$200,000
- Duration: January 2017 to December 2018
- Area: Livelihoods, Health
- Key Stats: 440 Women Served
- Key Successes:
  - 160 small group businesses started and 20 savings associations formed
  - 297 women report using health services

The BOMA Project delivers a proven Graduation Model program uniquely adapted to the arid lands of Northern Kenya. With our support, BOMA has expanded their program, which includes livelihood development and family planning education, to women and men in Marsabit and Samburu Counties.

# KENYA

## Noomayianat Community Development Organization



P.O BOX 155-00209 LOITOKITOK  
 EMAIL:- noomayianat@yahoo.com  
 info@noomayianat.org  
 Website:- www.noomayianat.org

- Region: SOUTHERN KENYA
- Grant Total: \$105,000
- Duration: October 2016 to September 2017
- Area: Food Security
- Key Stats: 6,853 People Served
- Key Successes:
  - 62 bags of sunflower seeds distributed, 1 sunflower oil processing machine
  - 30 women, members of VSLAs, have started small businesses

Noomayianat Community Development Organization works with the Maasai ethnic group in the Rift Valley of Kenya. With our support, NCDO has helped farmers increase their food security through improved agricultural practices, access to credit and financial services, and increased access to income-generating activities.

# MALAWI

## Action for Environmental Sustainability (AfES Malawi)



### AFES ACTION FOR ENVIRONMENTAL SUSTAINABILITY

- Region: SOUTHERN MALAWI
- Grant Total: \$165,496
- Duration: June 2016 to May 2018
- Area: Food Security
- Key Stats: 200 People Served
- Key Successes:
  - 253 out of 300 families reduced incidences of food security by 50%
  - Average Increase in farmer incomes: \$120

Action for Environmental Sustainability (AfES) supports the agricultural and community needs of the Kumponda community in Malawi. With our support, AfES installed gravity fed irrigation schemes and provided training on conservation agriculture techniques for community farmers and gardeners.



# MALAWI

PumpAid

- Region: CENTRAL MALAWI
- Grant Total: \$209,000
- Duration: October 2016 to September 2018
- Area: Food Security, Livelihoods, Sanitation & Hygiene
- Key Stats: 237 People Served
- Key Successes:
  - 6 pumps, 12 latrines, and 18 hand-washing facilities built
  - 287 children are practicing improved hygiene behaviors



Pump Aid works to improve the health of rural communities in Malawi. With our support, PumpAid improved access to water and sanitation at six community-based childcare centers in Mchinji District, Central Malawi. In addition, PumpAid established kitchen gardens at each childcare center which will improve the diets and nutrition for the children who attend everyday.

# PERU

DESEA Peru

- Region: SOUTHERN PERU
- Grant Total: \$65,100
- Duration: January 2017 to December 2017
- Area: Health, Water
- Key Stats: 5,572 People Served
- Key Successes:
  - 50% decrease in diarrhea cases in 2017
  - 26 in-home water filters installed



DESEA Peru supports Andean communities near Machu Picchu to improve their access to clean water and basic preventive health care. With our support, DESEA Peru provides training for community health workers to better serve their own communities, resulting in early detection and treatment of disease, first aid, and community health education.

# NICARAGUA

Green Empowerment

- Region: WEST-CENTRAL NICARAGUA
- Grant Total: \$107,522
- Duration: January 2017 to June 2018
- Area: Water, Sanitation and Hygiene, Livelihoods
- Key Stats: 232 People Served
- Key Successes:
  - 232 people have access to improved water source



Green Empowerment works with their local partner, AsoFenix to install a water pump system and train local technicians on its long term maintenance in the community of El Jazmin. With Vibrant Village support in 2017, Green Empowerment also provided hygiene and sanitation workshops and supported a bee-keeping micro enterprise.

# SENEGAL

Andando Foundation

- Region: CENTRAL SENEGAL
- Grant Total: \$160,000
- Duration: Food Security, Education, Health
- Area: Food Security
- Key Stats: 10,000 People Served
- Key Successes:
  - 12,000 people now have access to basic health services
  - 7,000 have access to water
  - 12 water sources, 12 latrines, 12 gardens and 6 classrooms were constructed.



In 2017, we continued our partnership with Andando to support villages around Keur Soce. The program we support has helped establish and manage market garden cooperatives, improve school infrastructure, rehabilitate two new health posts and partner with InStove to install efficient cook stoves in schools and health posts.



# SENEGAL

## CREATE



- Region: CENTRAL SENEGAL
- Grant Total: \$150,000
- Duration: January 2017 to December 2017
- Area: Food Security, Livelihoods
- Key Stats: 6,500 People Served
- Key Successes:
  - Average savings (per participant) in VSLA: \$76
  - 5 gardens were constructed and 5 wells were rehabilitated with solar pumps.

CREATE! continued their on-going work in communities of Central Senegal by providing training in agricultural techniques to the cooperative market garden members, forming Voluntary Savings and Lending Associations (VSLA), and promoting income-generating activities. Our 2017 funding helped CREATE expand to two new communities.

# TANZANIA

## Africa Bridge



- Region: SOUTHWEST TANZANIA - Kisondele Ward
- Grant Total: \$500,000
- Duration: April 2016 to March 2021
- Area: Livelihoods, Education, Food Security
- Key Stats: 1,775 People Served
- Key Successes: 100% of identified vulnerable children in the program area are attending school

In 2017, Africa Bridge completed their second year of project activities in Kisondele Ward. With our support, Africa Bridge provided services and programming to households that care for the most vulnerable children through regular home visits, and livelihood opportunities for care-givers.

# TANZANIA

## Africa Bridge



- Region: SOUTHWEST TANZANIA - Lufingo Ward
- Grant Total: \$287,088
- Duration: January 2014 to December 2017
- Area: Livelihoods, Education, Food Security
- Key Stats: 2,182 People Served
- Key Successes: 820 families participated income generating co-op groups.

Africa Bridge has been working in Lufingo Ward with the support of Vibrant Village Foundation since 2014 and is in the final stages of graduating the community from their program. Africa Bridge has provided programming and support to households with vulnerable children in an area of Tanzania impacted by the devastation of HIV/AIDS. Psychosocial support, wellbeing committees, and livelihood programming for families have helped families and children.

# UGANDA

## Environmental Conservation and Agricultural Enhancement Uganda (Eco-Agric Uganda)



- Region: CENTRAL UGANDA
- Grant Total: \$83,450
- Duration: October 2014 to September 2017
- Area: Food Security, Education, Livelihoods
- Key Stats: 600 People Served
- Key Successes: 130% Increase in households having three meals a day

In partnership with Vibrant Village Foundation, Eco-Agric Uganda supported women-headed households with income generating activities like crop production, market development and savings programs. Eco-Agric Uganda also assisted young women with vocational training and start-up kits in tailoring and hair dressing.



# UGANDA

Bega Kwa Bega



**BegakwaBega**  
Shoulder to Shoulder for  
**UGANDA ORPHANS**

- Region: NORTHWEST UGANDA
- Grant Total: \$107,918
- Duration: August 2015 to July 2017
- Area: Health, Food Security, Livelihoods, Water
- Key Stats: 5,374 People Served
- Key Successes:
  - 74% reduction in waterborne illness
  - 67% increase in family income

In 2017, Bega Kwa Bega completed a two-year grant. With our support they provided mobile health clinics, agricultural training and support, and income generating activities for participants. Additionally, Bega Kwa Bega concluded a water access program that brought drinking water to 1,800 people.

# ZIMBABWE

Local Initiatives in Development



**LID Agency**  
local initiatives & development

- Region: SOUTHERN ZIMBABWE
- Grant Total: \$344,891
- Duration: May 2015 to April 2018
- Area: Water, Food Security, Education
- Key Stats: 1,620 People Served
- Key Successes:
  - Average farmer income from savings groups is \$502/year
  - Farmers produced an average of 2.6 metric tons of produce per farmer

With Vibrant Village Foundation support Local Initiatives in Development is building water infrastructure and storage facilities in addition to providing agricultural training to farmers with the objective of improving food security in the Shurugwi District. In 2017, they implemented a school lunch program, renovated classroom blocks and sanitation facilities, and provided water to two schools.

# UGANDA

The Water Trust



**THE WATER TRUST**

- Region: NORTHERN UGANDA
- Grant Total: \$132,000
- Duration: January 2017 to December 2017
- Area: Water, Sanitation & Hygiene
- Key Stats: 14,000 People Served
- Key Successes:
  - 18 water points, 36 latrines, and 56 hand-washing facilities were repaired or constructed.
  - 89% increase in students demonstrating proper hand-washing techniques.
  - 20% decrease in student-reported diarrhea at school.

In 2017, we entered into a new partnership with The Water Trust in Western Uganda. With our support they improved WASH infrastructure in schools and train leaders to promote good hygiene habits for nearly 14,000 children.

# ZIMBABWE

Ntengwe for Community Development



for community development  
**ntengwe**

- Region: NORTHERN ZIMBABWE
- Grant Total: \$64,920
- Duration: October 2016 to September 2017
- Area: Sanitation & Hygiene, Water, Food Security
- Key Stats: 50 Households Served
- Key Successes:
  - 70% decrease in the number of households reporting hunger.

Our partnership with Ntengwe in 2017 focused on providing support to improve food, nutrition and income security for rural Zimbabwean farmers. Ntengwe secured a solar water pump structure that provides water for local farms, trained farmers on organic farming techniques and helped farmers gain access to value addition strategies.





**VIBRANT  
VILLAGE**  
FOUNDATION

2017.18  
**PORTFOLIO  
SNAPSHOT**

[info@vibrantvillage.org](mailto:info@vibrantvillage.org)

971-808-1575

1737 NE Alberta Street

Suite 207

Portland, Oregon 97211

[www.vibrantvillage.org](http://www.vibrantvillage.org)